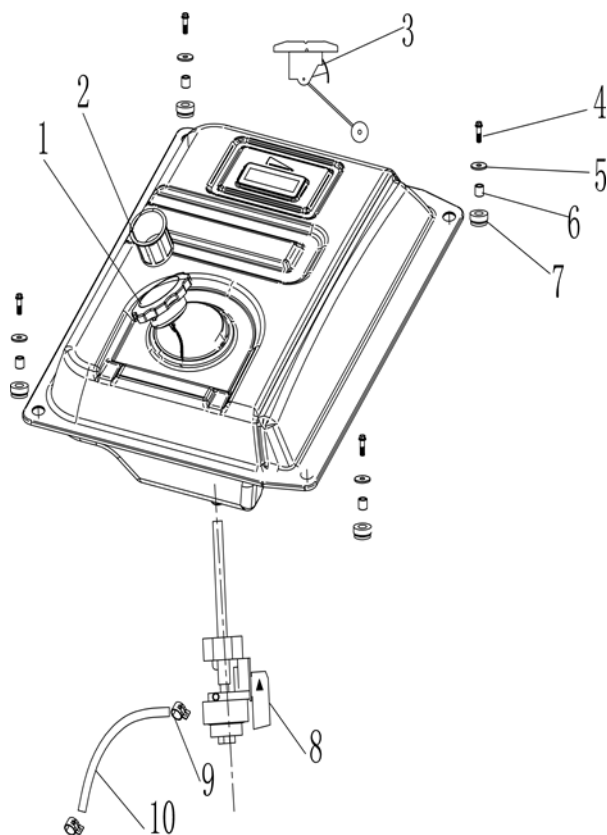
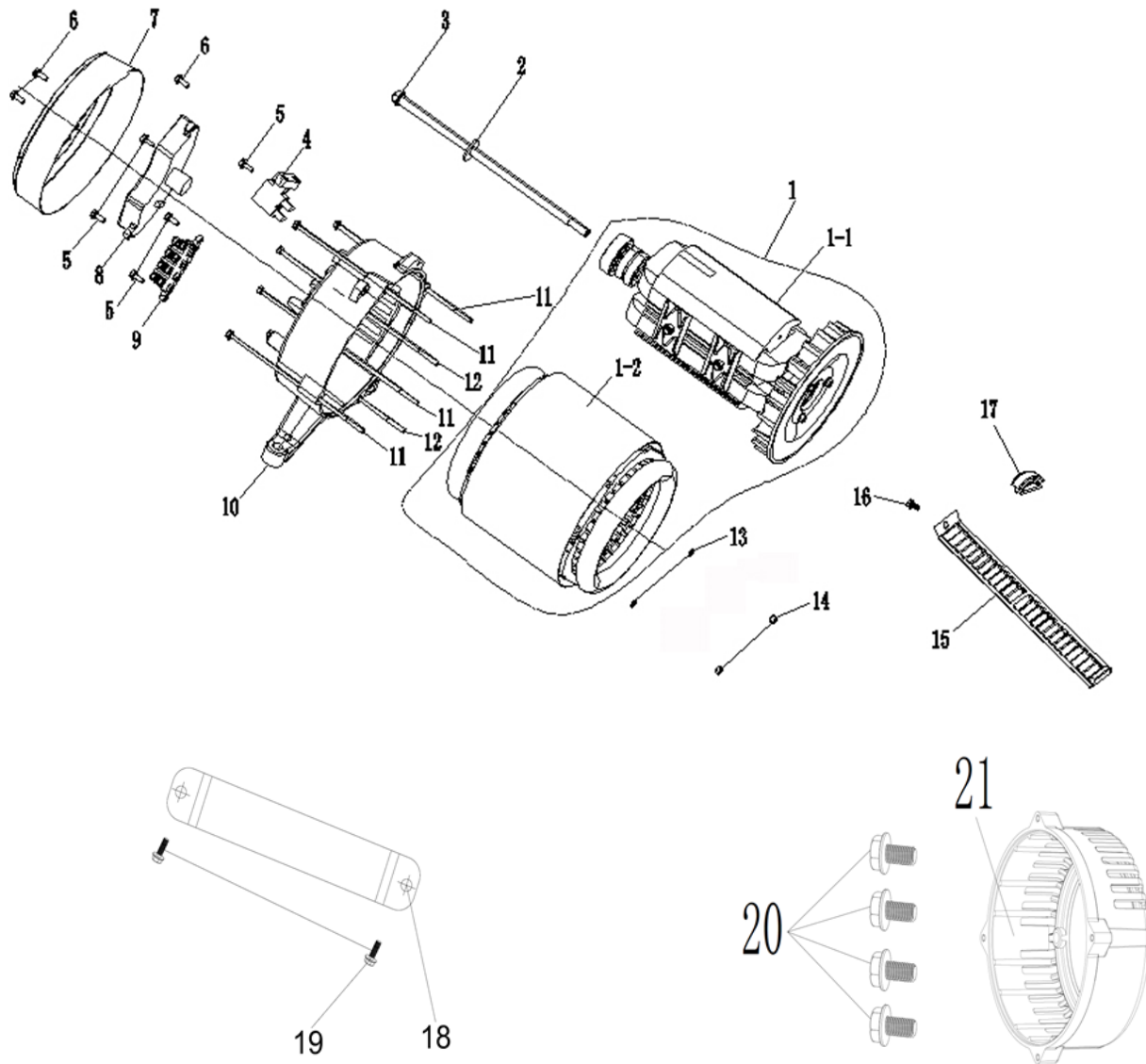
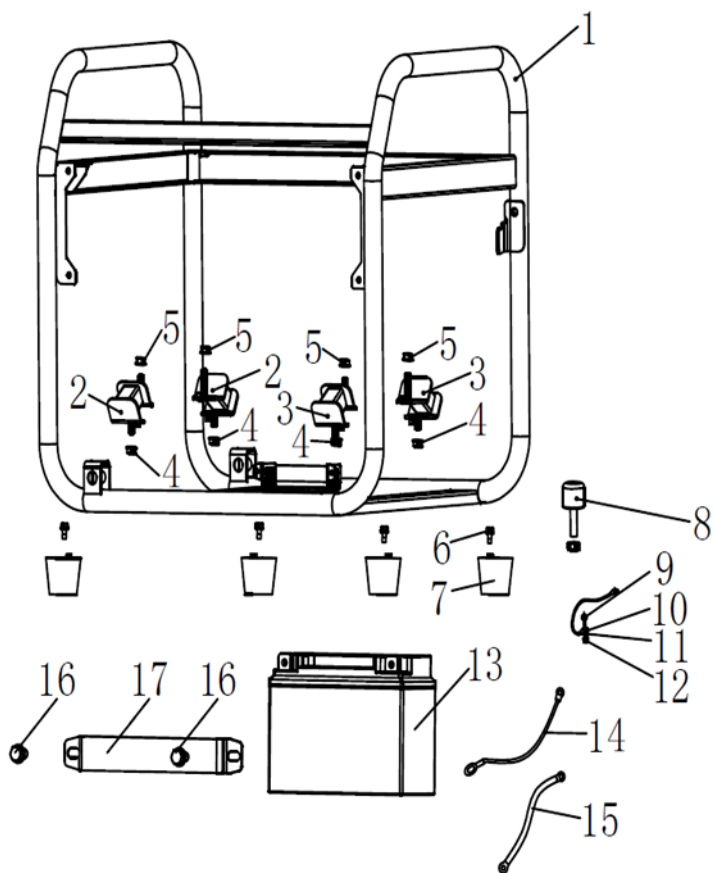
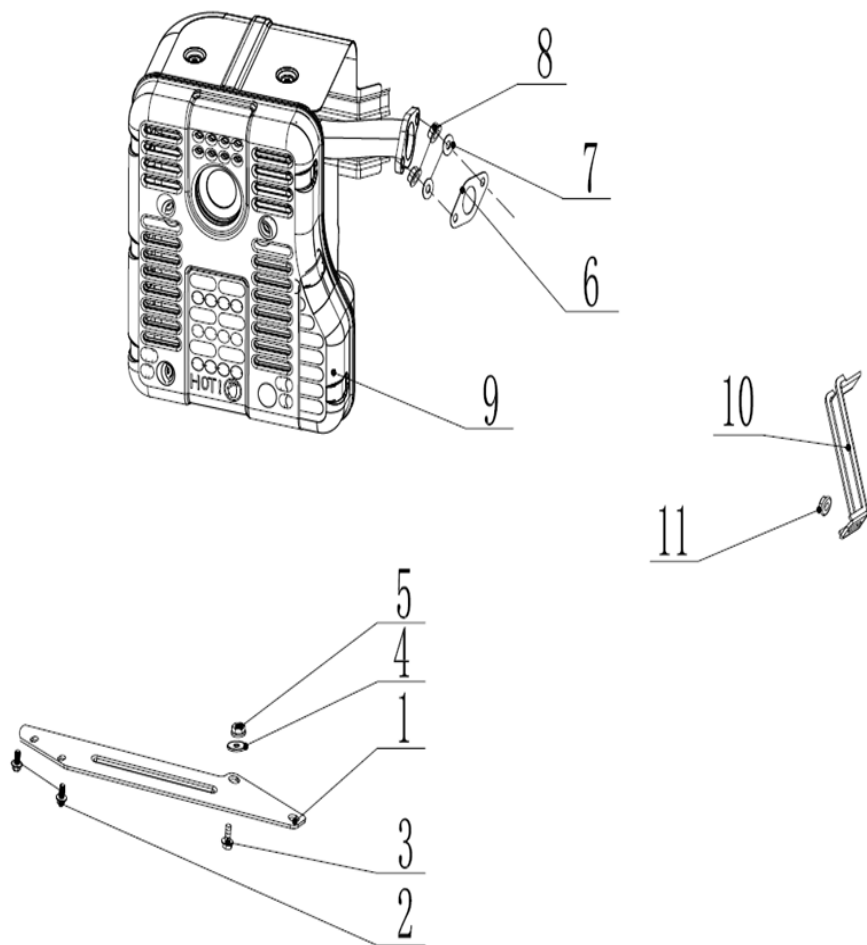
[illegible]

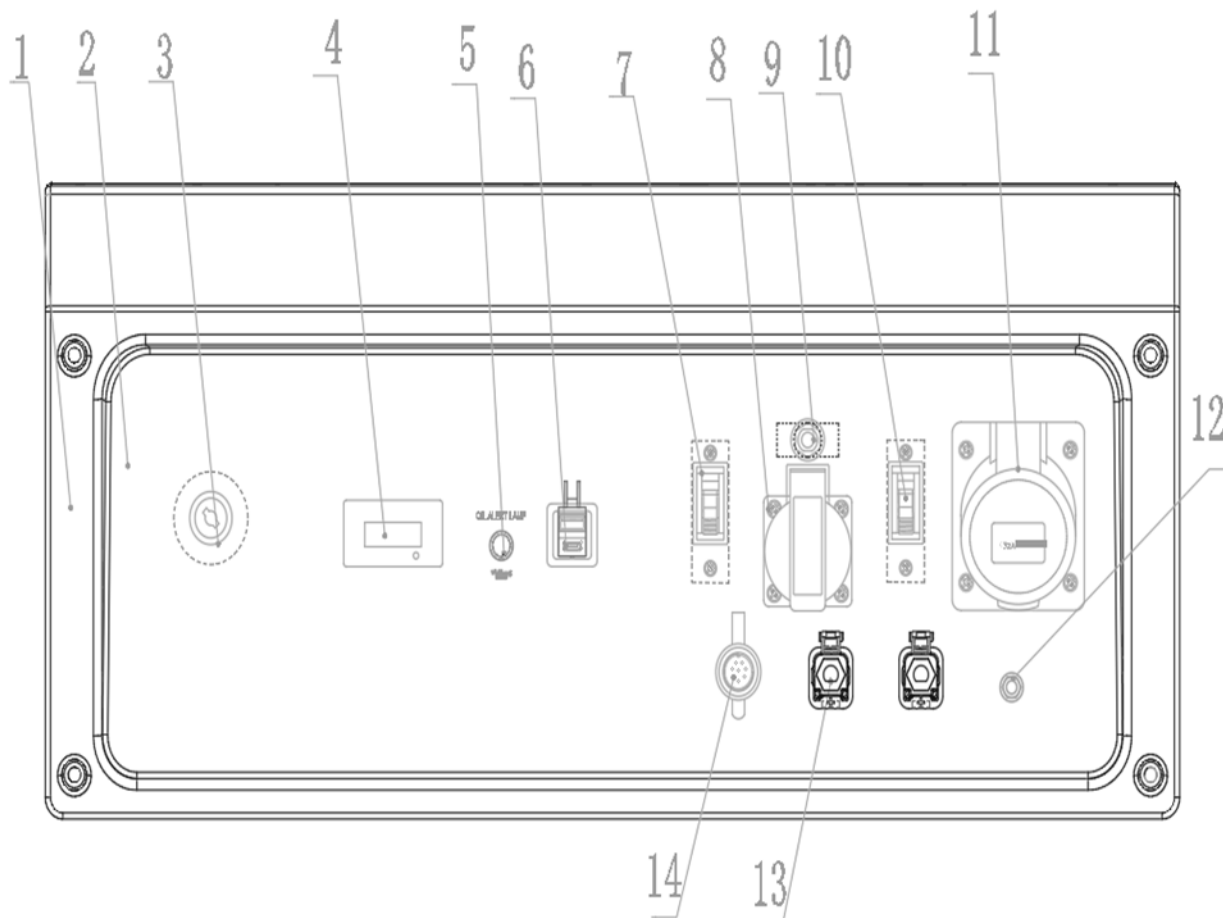
[illegible]

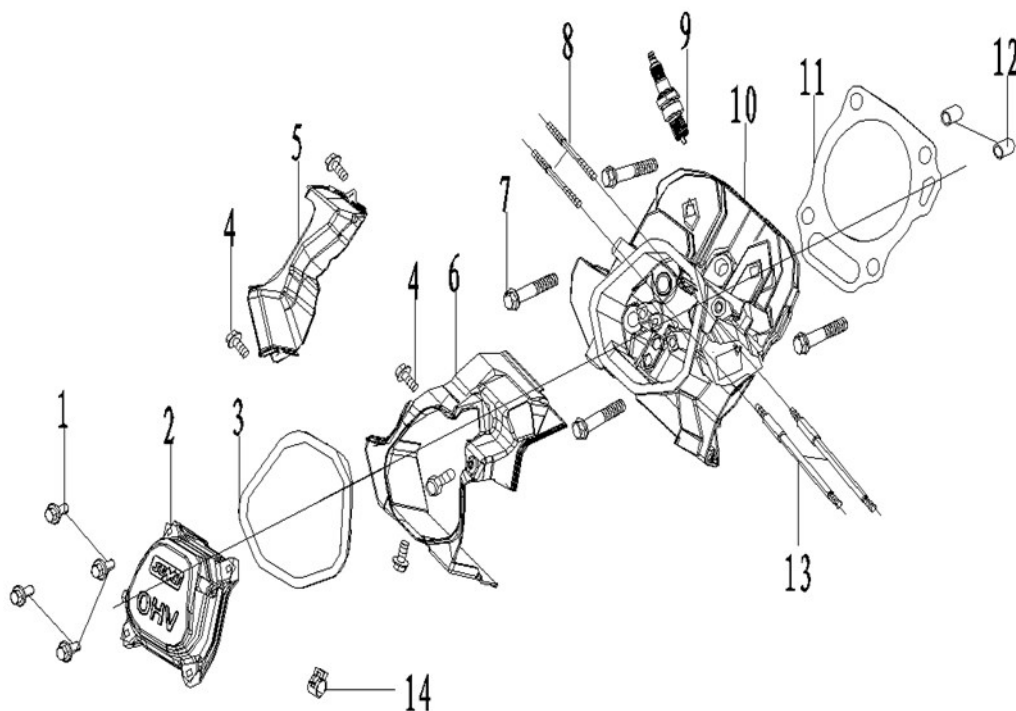


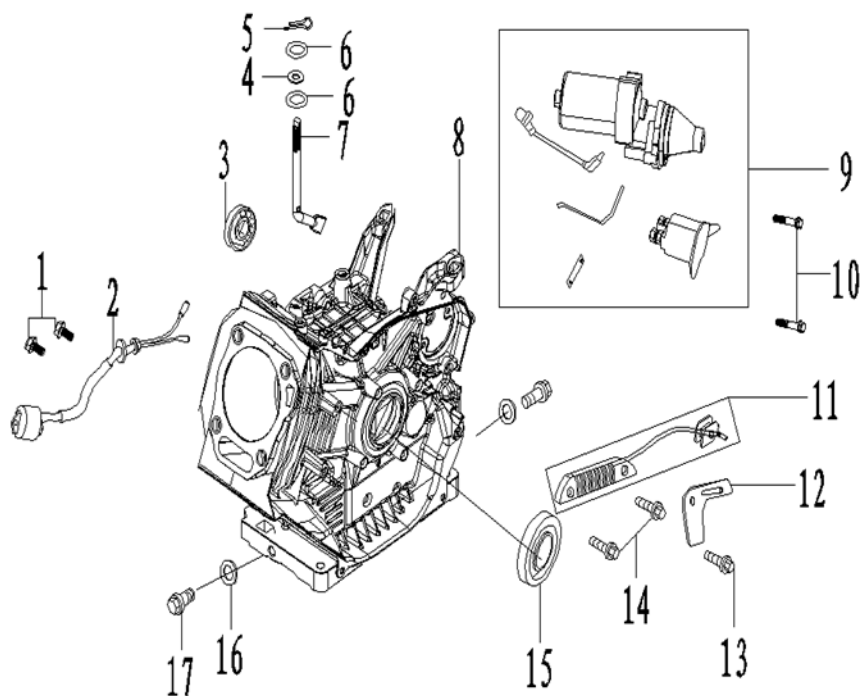
№	Артикул	Наименование	Кол
1		Генераторная часть (якорь +статор)	1
1-1		Якорь	1
1-2		Статор	1
2		Шайба	1
3	921-350-203	Болт	1
4	921-350-204	Щетка графитовая	1
5		Болт	5
6		Болт	3
7	921-350-207	Крышка генератора задняя	1
8	921-350-208	Регулятор напряжения (АВР)	1
9		Колодка	1
10	921-350-210	Крышка опора задняя	1
11		Болт	4
12		Болт	2
13		Шайба	2
14		Гайка	2
15		Решетка	1
16		Винт	1
17		Втулка резиновая	2
18		Кронштейн	1
19		Болт	2
20		Болт	4
21		Крышка генератора передняя	1
<b>Генератор бензиновый</b>			Модель
			<b>G850E</b>
Technical department		Assembly drawing	
Engineer, chief designer		John Emerson Jr.	
DYNAMIC DRIVE EQUIPMENT, USA			Page 3

[illegible]

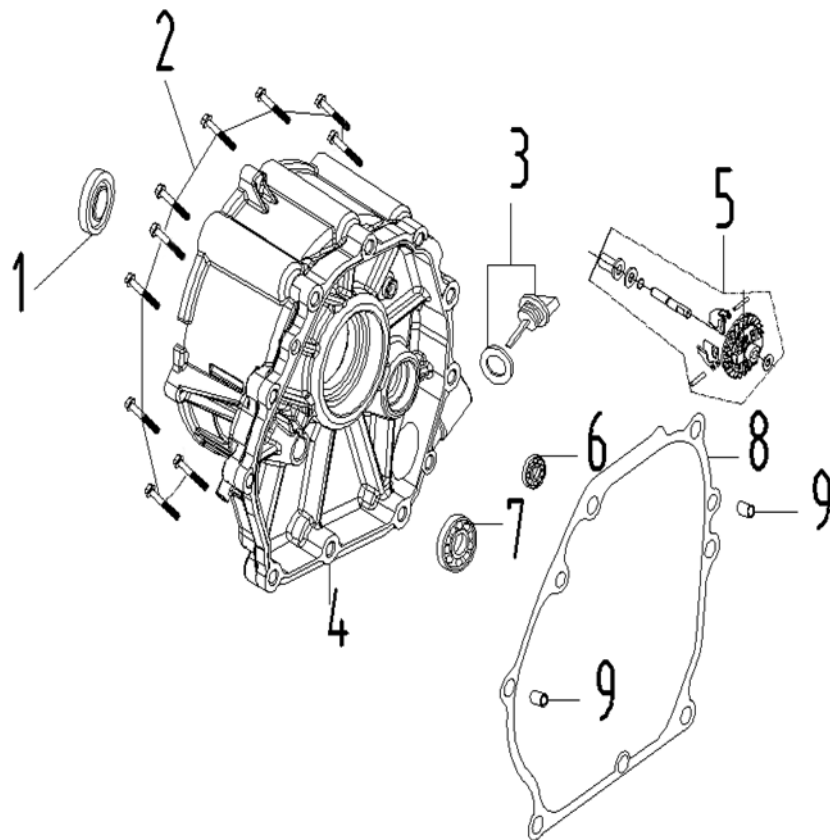
[illegible]

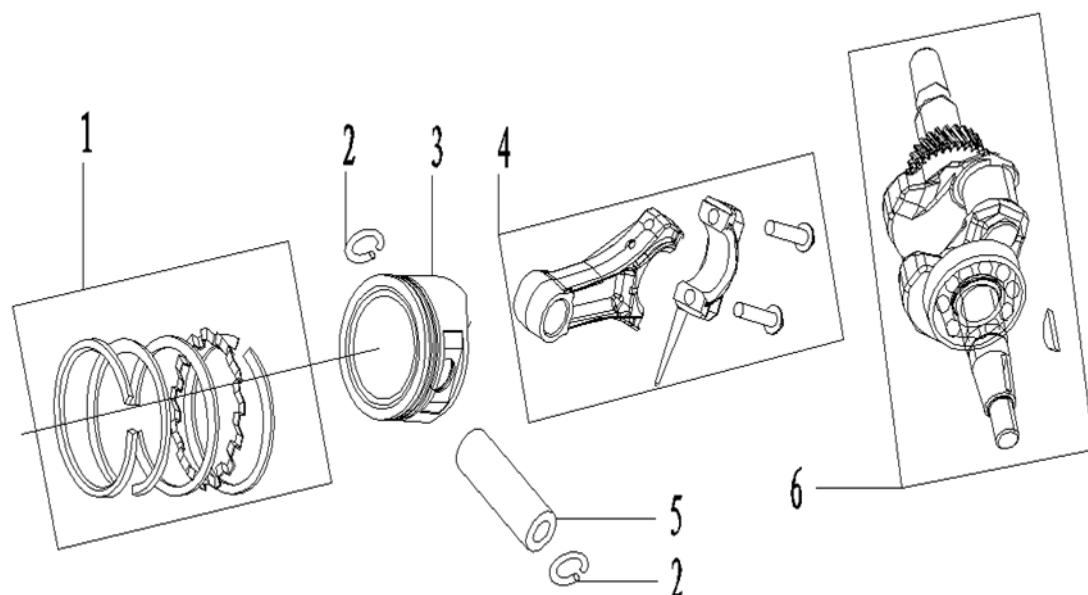
[illegible]

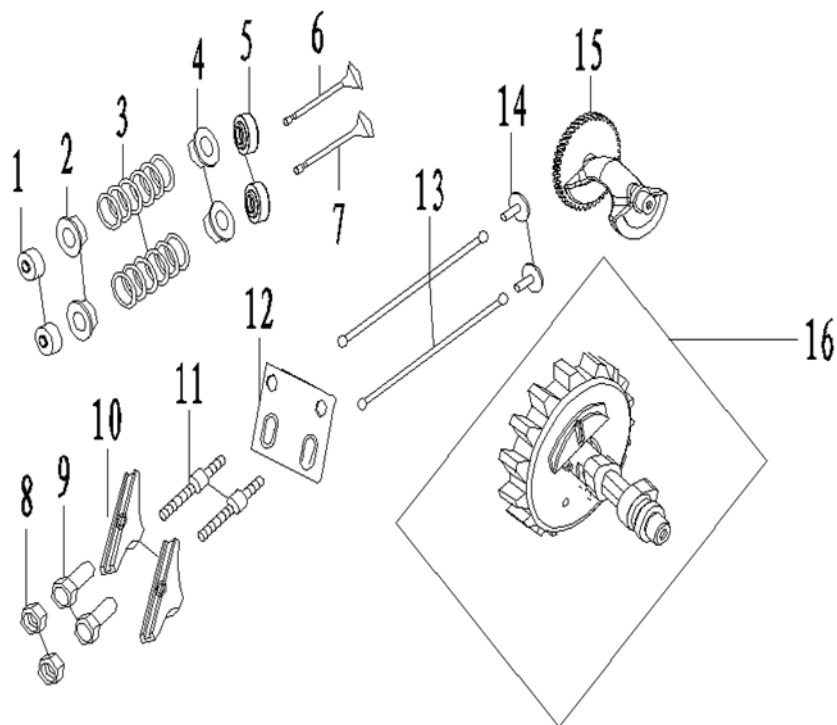
[illegible]

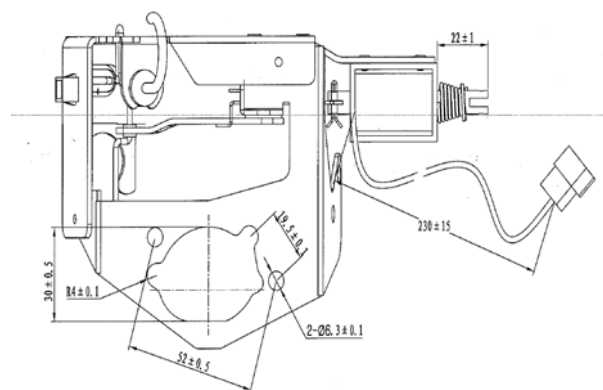
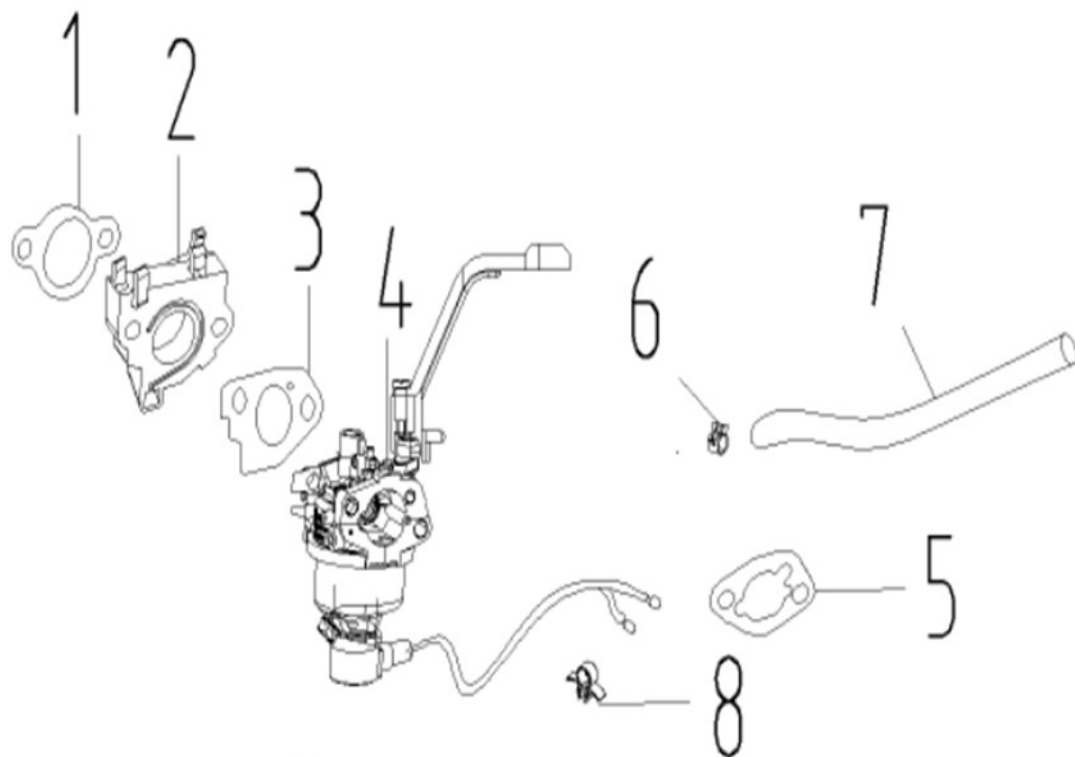
[illegible]



[illegible]

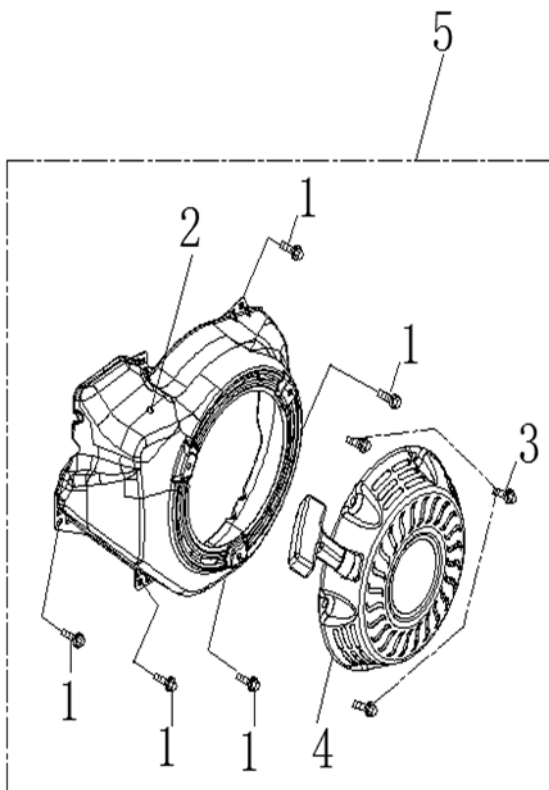
[illegible]

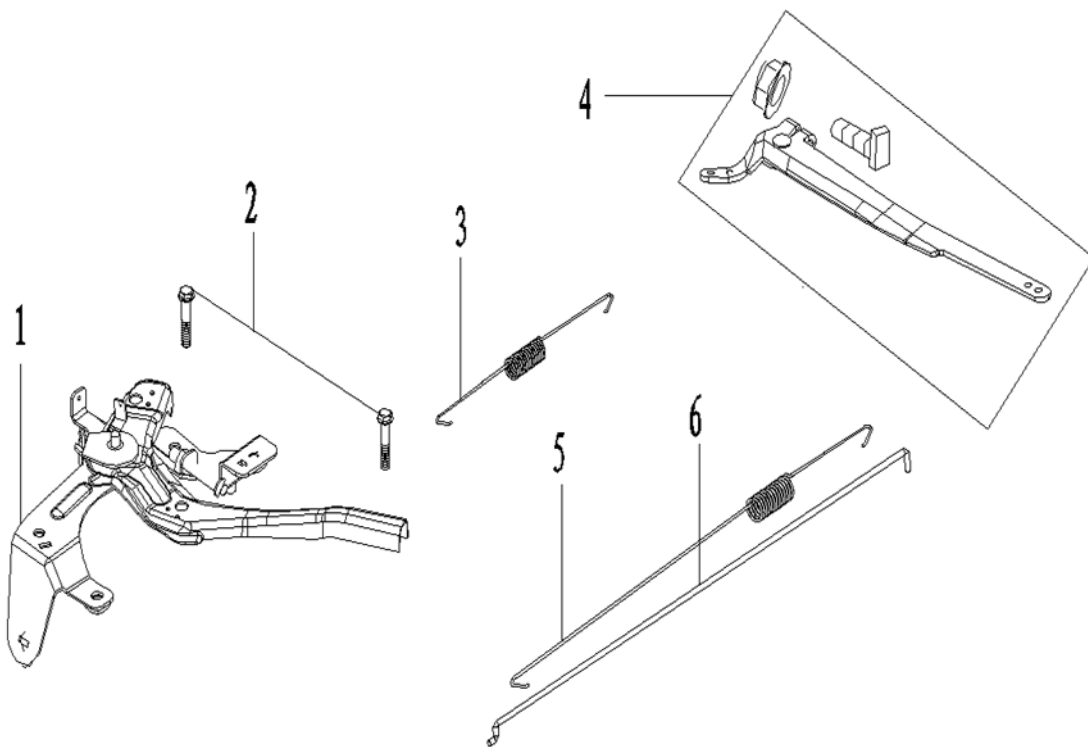
[illegible]

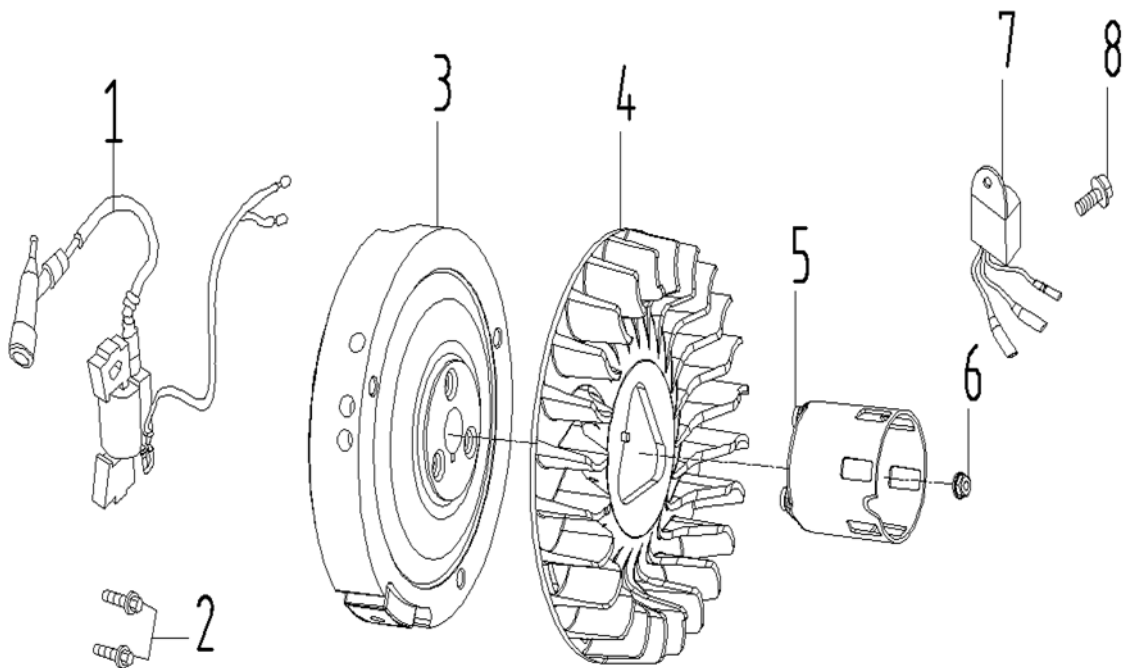


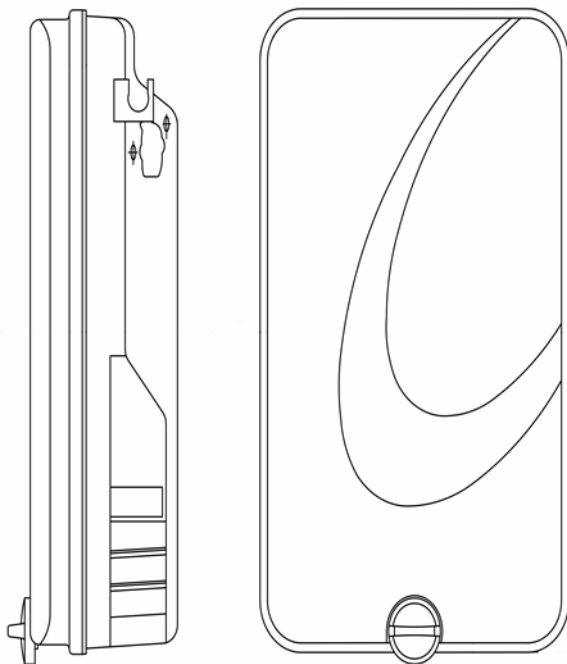
9

[illegible]

[illegible]

[illegible]

[illegible]

[illegible]