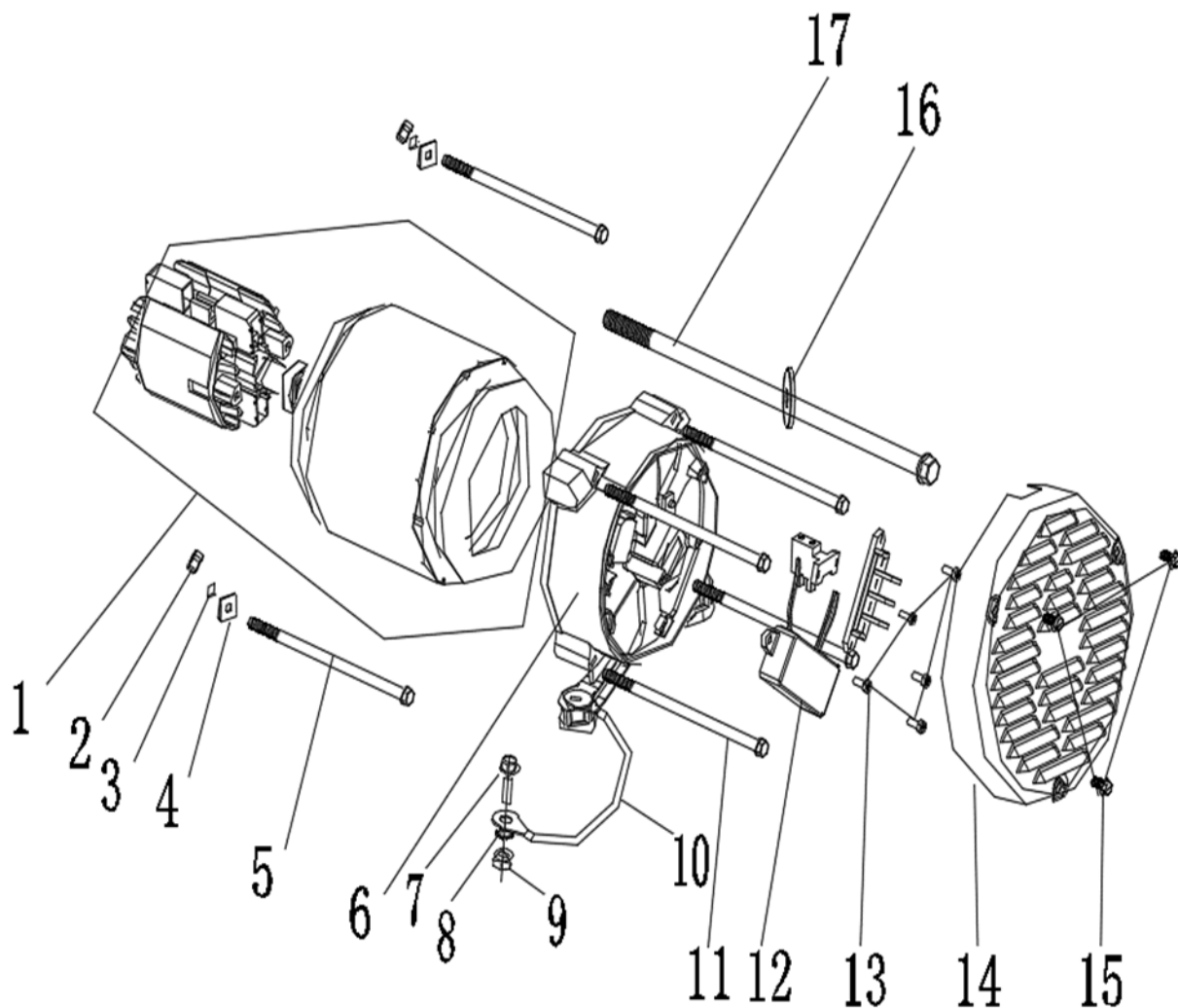
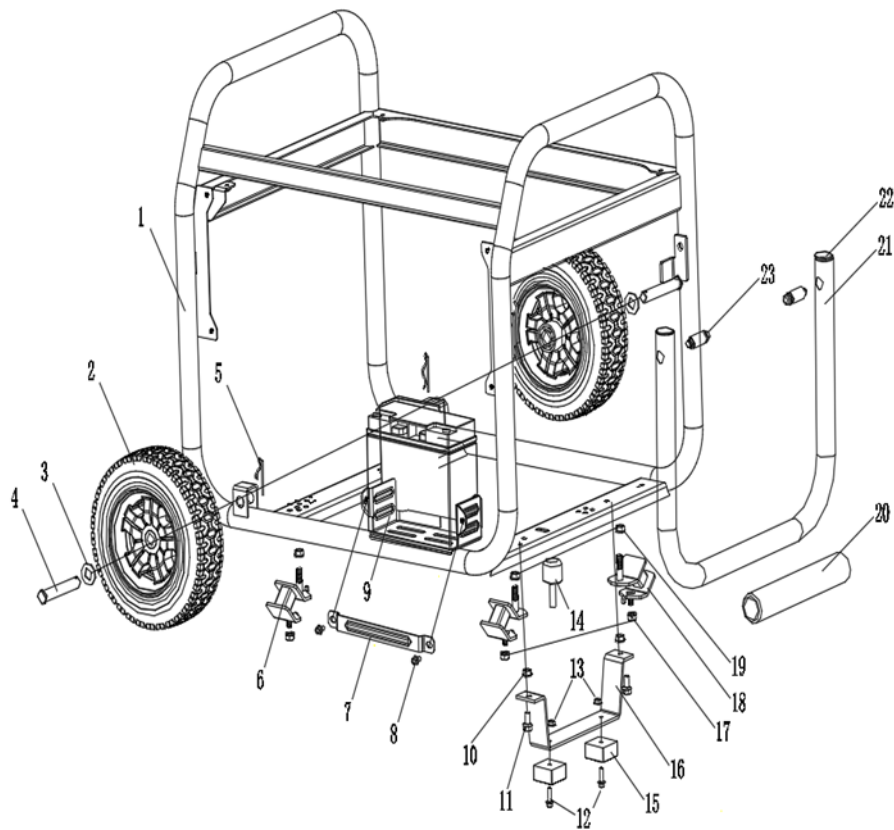
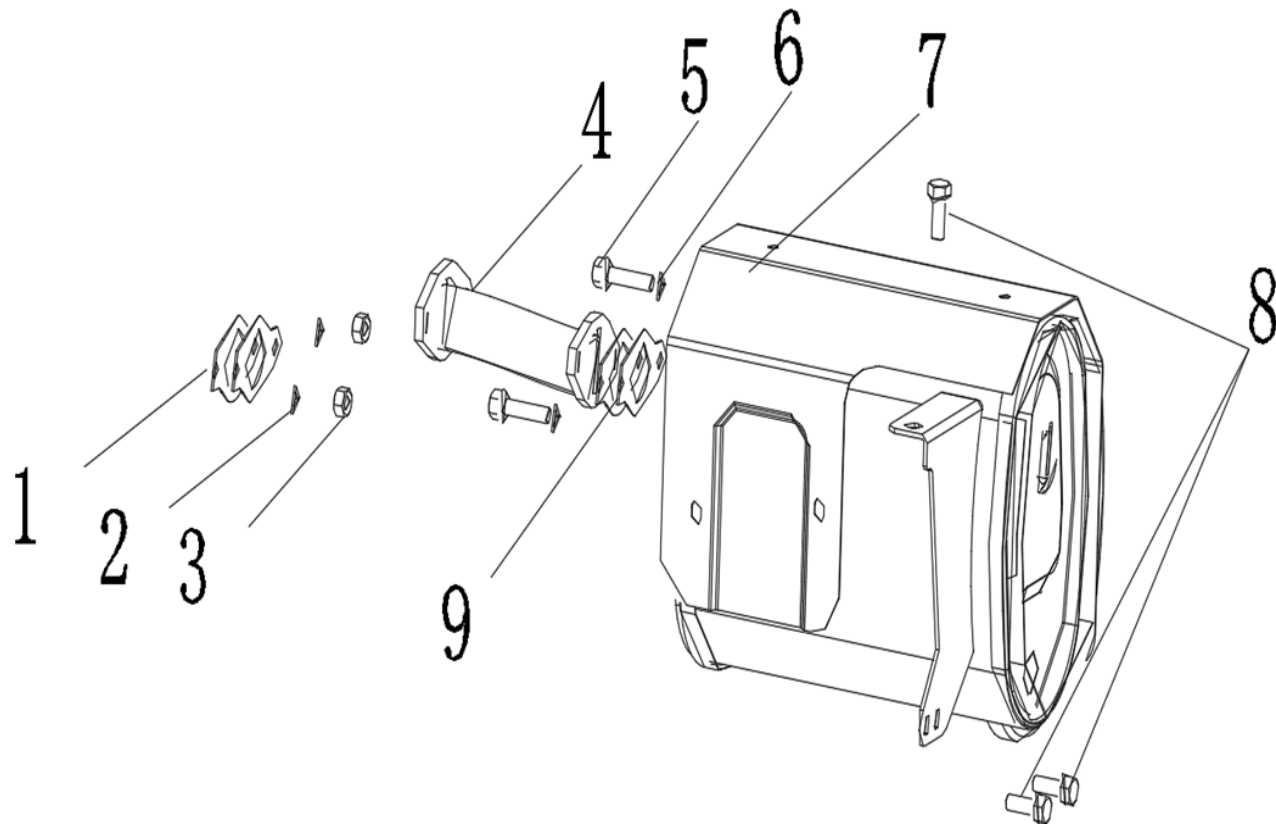
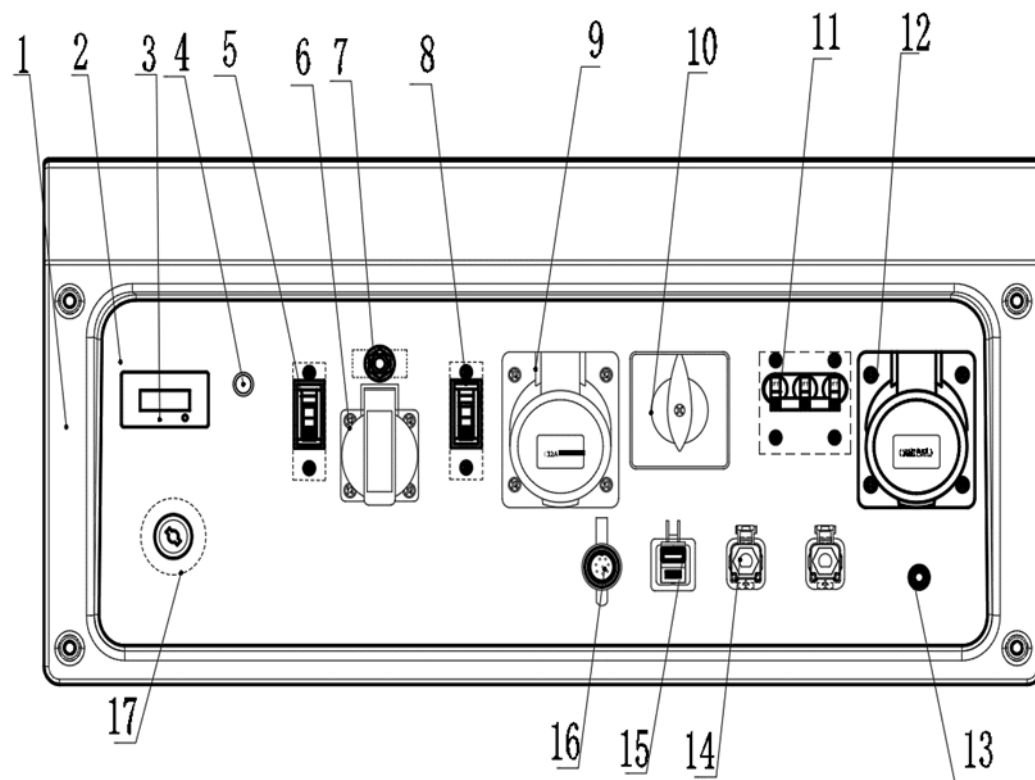
[illegible]

[illegible]

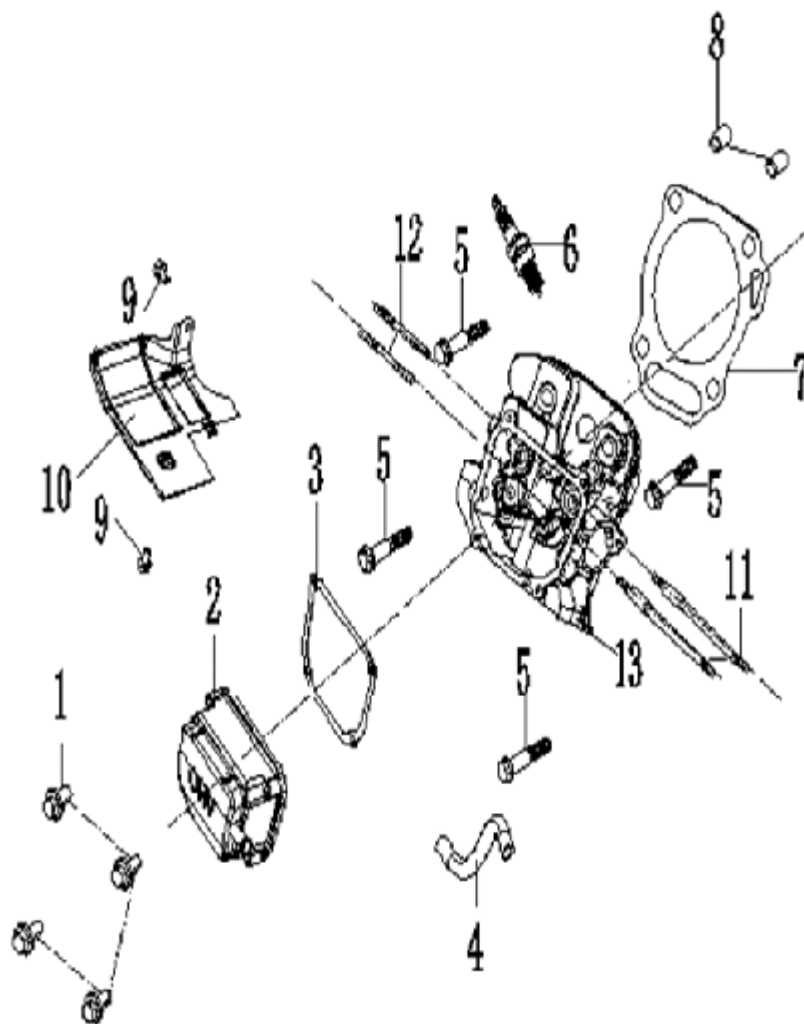


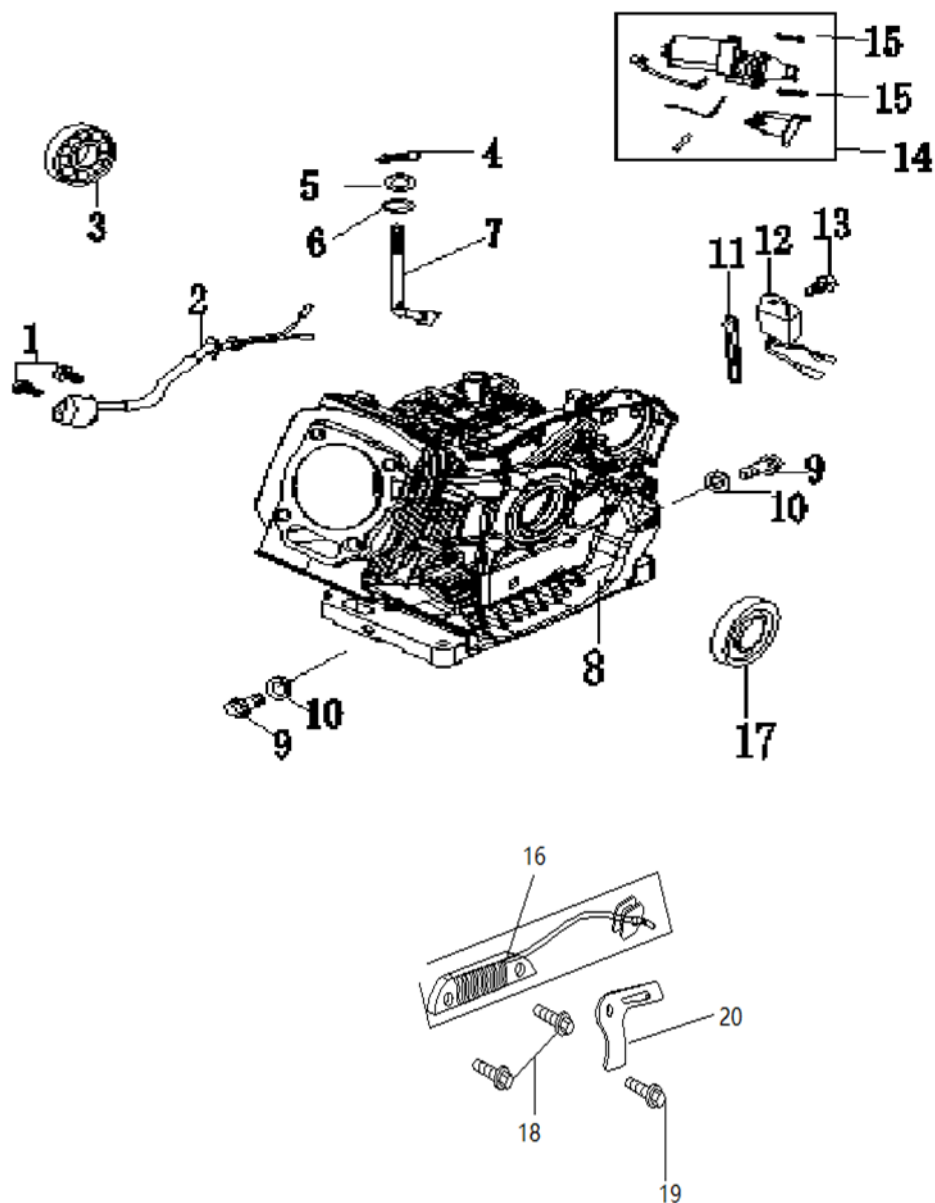
№	Артикул	Наименование	Кол
1		Рама	1
2	921-374-302	Колесо	2
3		Шайба	2
4	921-374-304	Ось колеса	2
5			
6		Виброгаситель	2
7		Планка	1
8		Болт	2
9		Кронштейн	1
10		Гайка	2
11		Болт	2
12		Болт	2
13		Гайка	2
14		Упор транспортировочный	1
15	921-374-315	Ножка резиновая	2
16	921-374-316	Кронштейн	1
17		Гайка	4
18		Виброгаситель	2
19		Гайка	4
20		Накладка	1
21	921-374-321	Ручка	1
22		Заглушка	2
23		Втулка	2
Генератор бензиновый		Модель	
		G950E3	
Technical department		Assembly drawing	
Engineer, chief designer		John Emerson Jr.	
DYNAMIC DRIVE EQUIPMENT, USA			Page 4

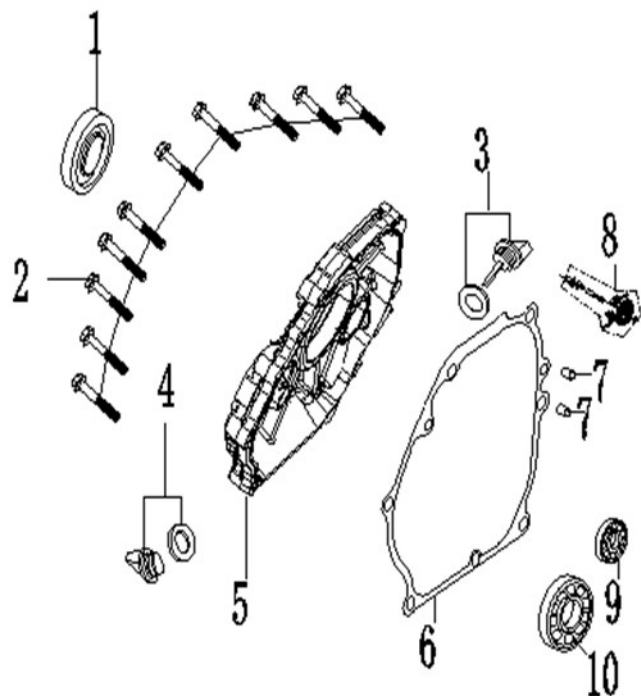
[illegible]

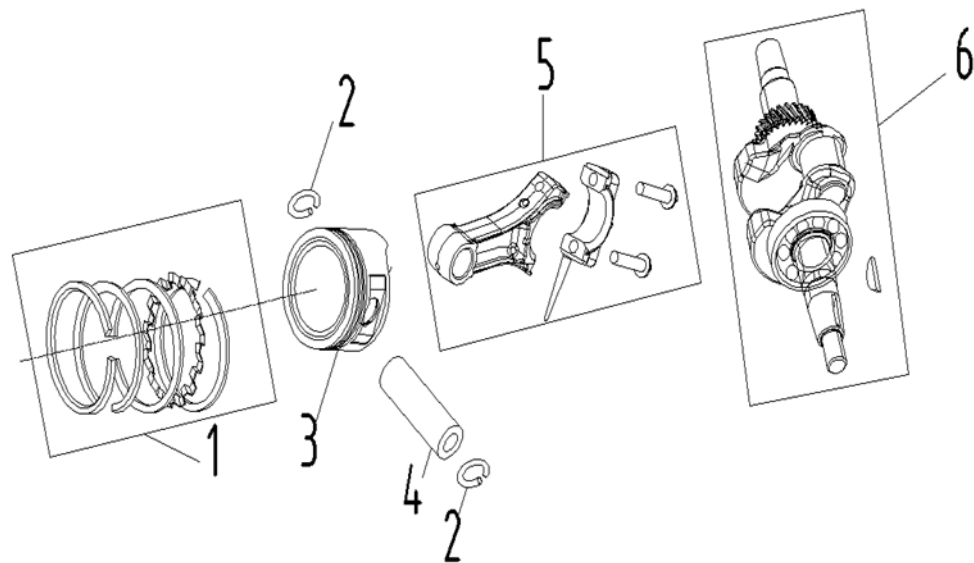


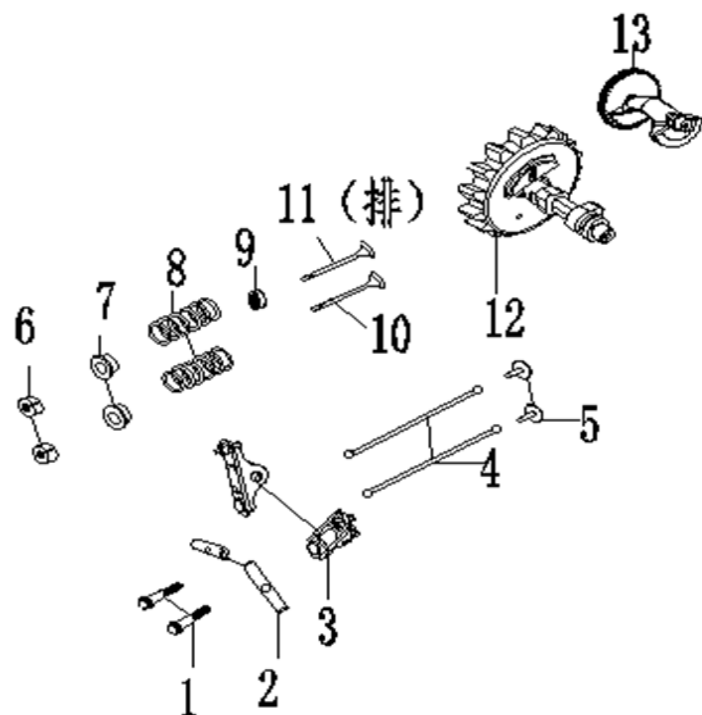
Генератор бензиновый		Модель
		G950E3
Technical department	Assembly drawing	
Engineer, chief designer	John Emerson Jr.	
DYNAMIC DRIVE EQUIPMENT, USA		Page 6

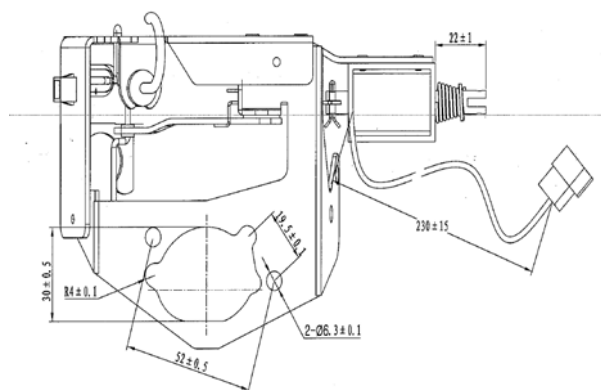
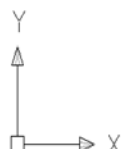
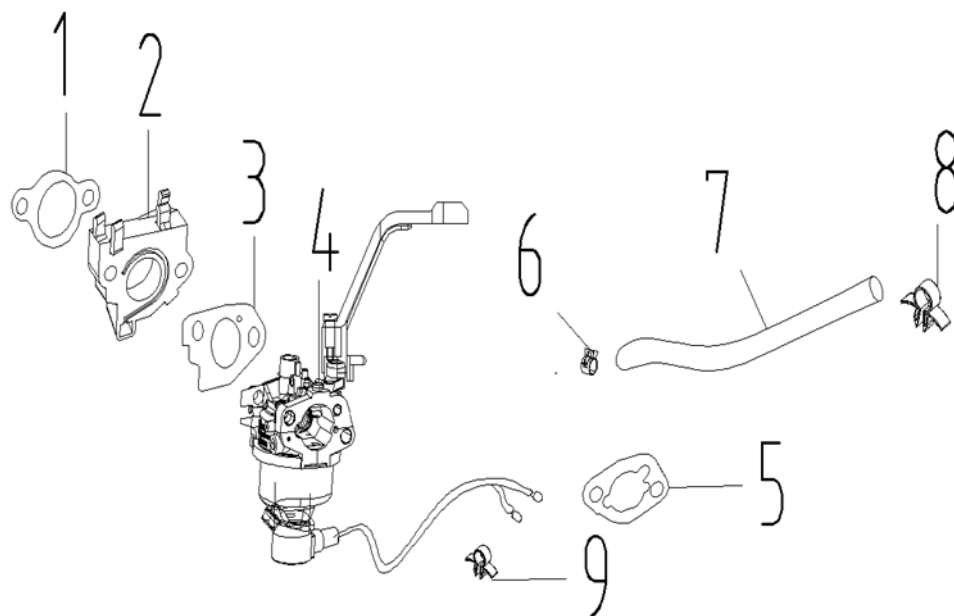
[illegible]

[illegible]

[illegible]

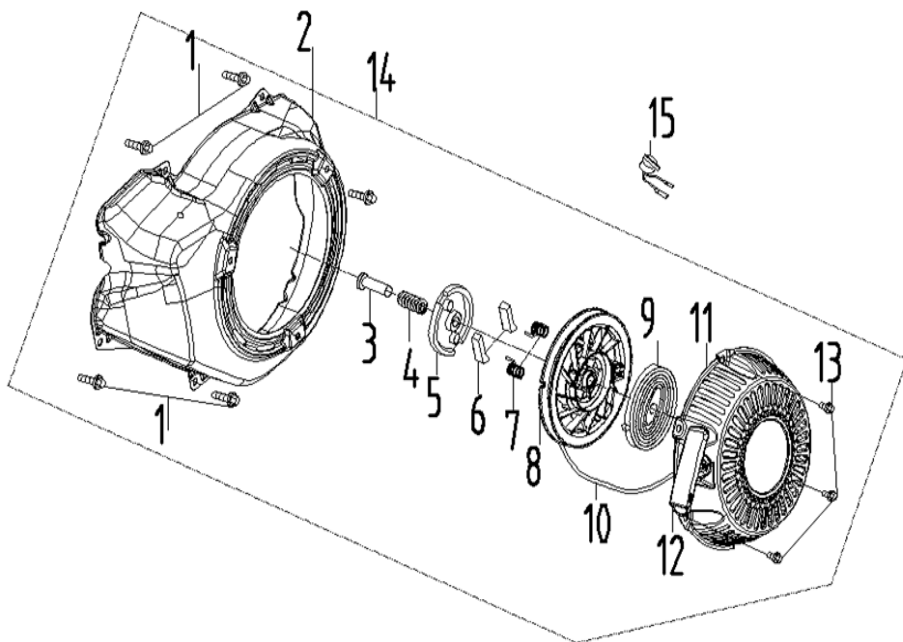
[illegible]

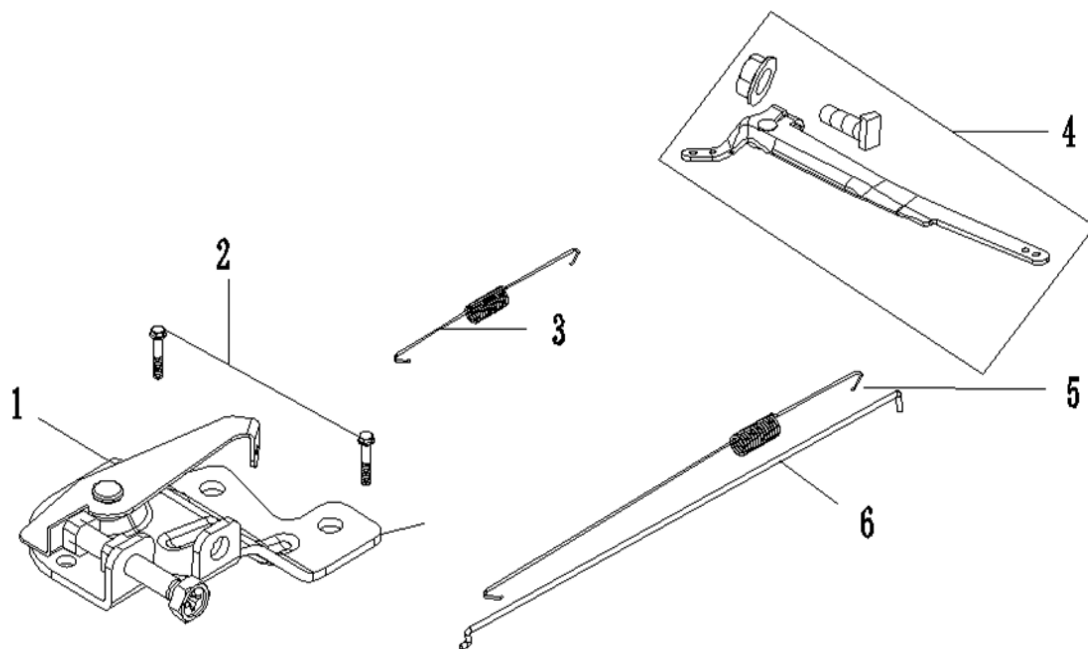
[illegible]

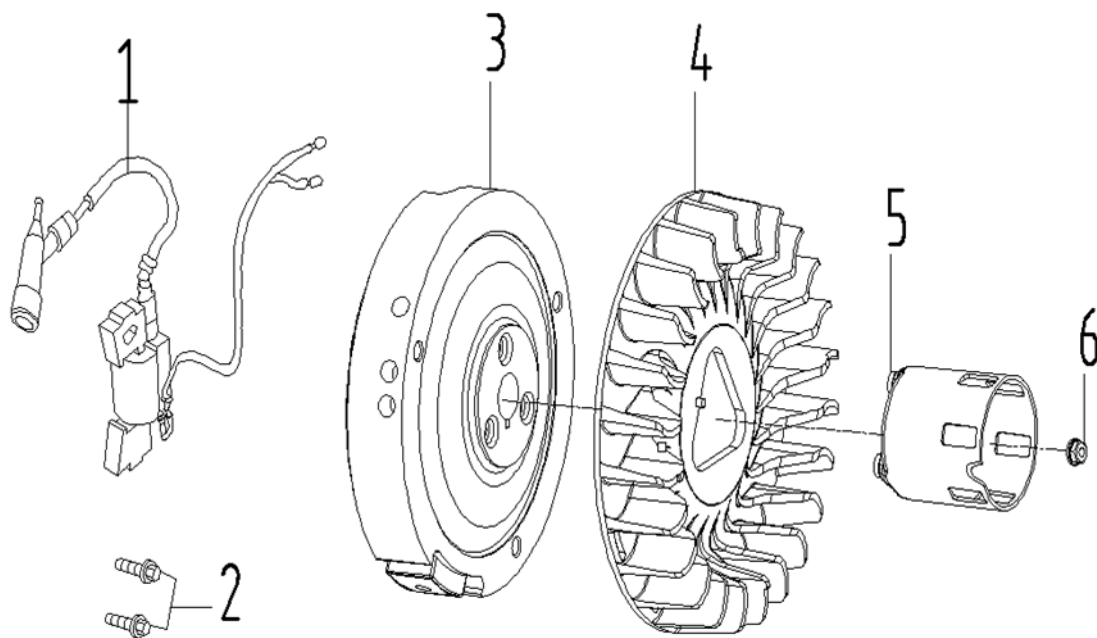


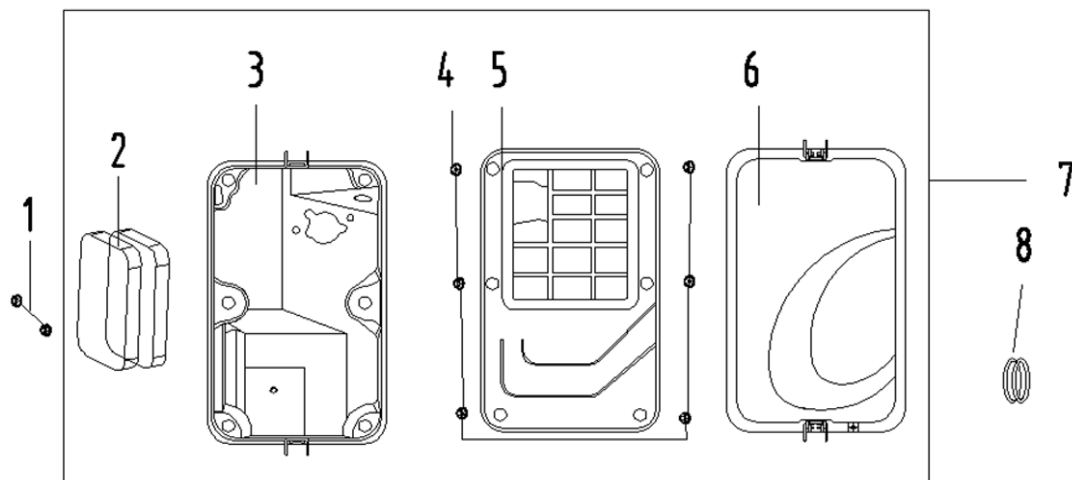
9

[illegible]

[illegible]

[illegible]

[illegible]

[illegible]